



## New Product release

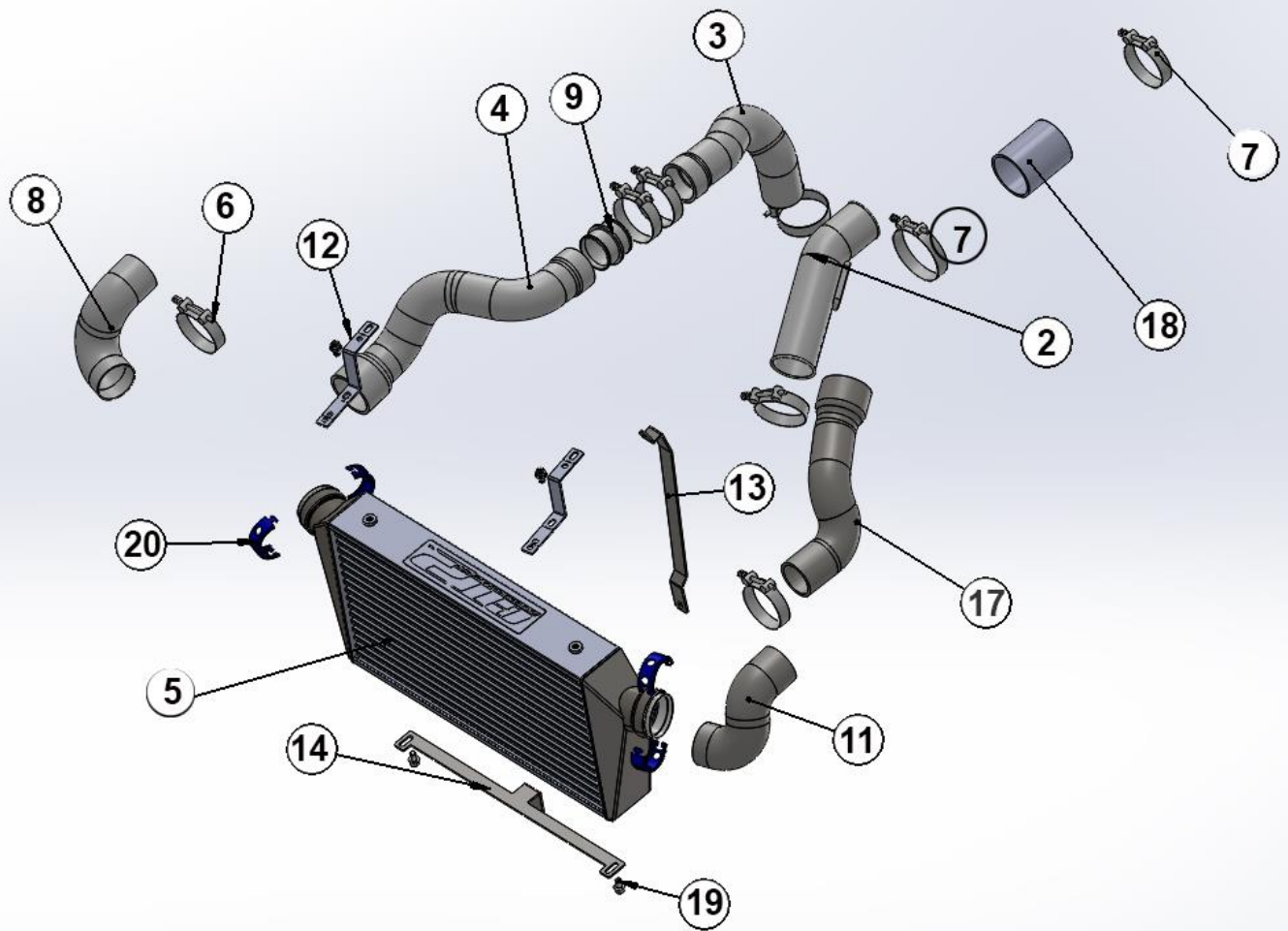
## HDi GT2 520 Intercooler Kit for Toyota 7-3.0L

(Pictures may be different than the actual products!)



A collection of automotive performance parts is displayed on a white background. The central piece is a large, rectangular aluminum intercooler with a black mesh core. Surrounding it are various hoses and fittings: two large black hoses with 'HKS' branding, several polished metal elbows and straight pipes, a blue air filter with 'HKS' branding, and various clamps, including metal band clamps and a black plastic clamp. There are also several small metal fasteners and a metal plate with multiple holes.

2



## Part list

ITEM NO.	PART NUMBER	DESCRIPTION	QTY.
2	Alp-171A-HLXV7-COR2	Cold side version 7 Throttle body pipe with sensor port	1
3	Sp-170A-HLXV7-HOT	Hot side version 7 turbo out	1
4	Sp-170B-HLXV7-HOT	Hot side version 7 intercooler connection hose	1
5	GT2-520-HILX	Gen7 and Gen8	1
6	2.5inch hose clamp	2.5" Stainless steel clamp	5
7	2.75inch hose clamp	2.75"Stainless steel clamp	3
8	Alp-172L- Hilxv7-64	Driver side intercooler inlet pipe	1
9	HDi-Adptr-55mm-H-H	HD I 55mm hose to hose adaptor	1
11	Alp-172R- Hilxv7-64rev1	Passenger side intercooler inlet pipe	1
12	BK-24	Intercooler Top mounting Bracket	2
13	BK83	Centre latch support replacement bracket	1
14	BK-82	Gen 7-Gen 8 bottom bracket	1
17	Sp-171B-HLXV7-CO-fnl	intercooler out let hose cold side	1
18	SH-2.5-3.5	2.5" silicon hose for throttle body	1
19	M8x 12	M8 Intercooler mounting bolts	4
20	GT-cls-or-51-2016	HDi Clamp outer	4
22	ORING-2.0''	Oring 2.0''	4



Picture shown is the HDi GT2 520 Toyota 7 boost adaptor pipe





Picture shown is the HDi GT2 520 Toyota 7 intercooler kit high quality brackets and  
CNC aluminum parts



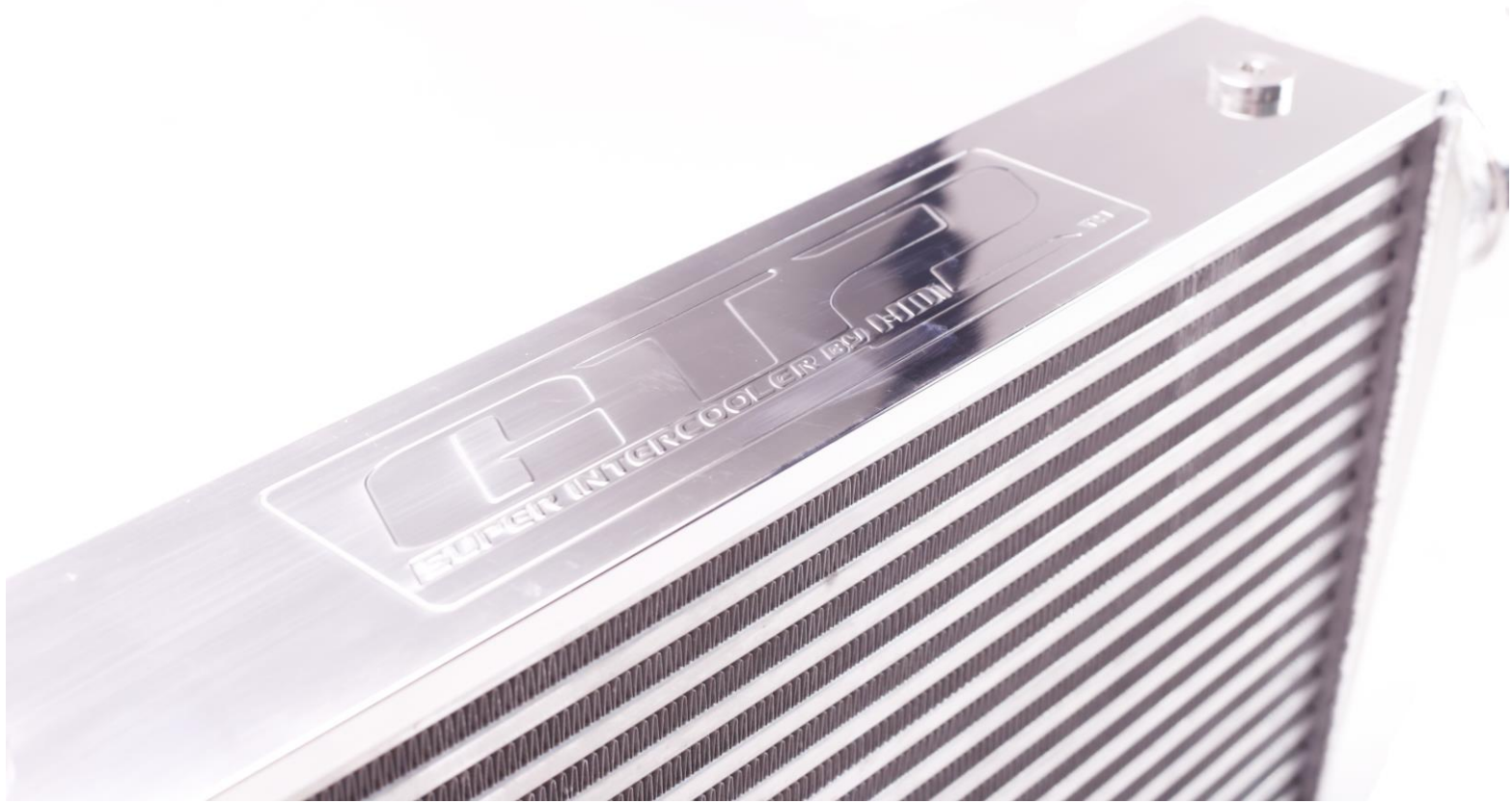
Picture shown is the HDi GT2 520 Toyota 7 intercooler kit high quality stainless steel Bottom and Latch support brackets



**Work of an ART finishing CNC mounting bolt**







**Work of an ART finishing with HDi GT2 logo, a 300 tons indentation pressed for your quality guaranty  
Neither stickers nor a riveted plate on a universal core!)**

**Product name: NEW HDi GT2 520 Intercooler kit for Toyota 7 3.0L**

**Product code: IK-HIL-7-GT2-520**

**Application: Toyota 7 3.0L 04-15 year**

**This is the Best and the simplest upgrade to improve you throttles response and power and torque  
over the OEM Top mounted intercooler design. Dyno proven guarantee increase in power and torque!  
Specially design GT2 light weight technology for Version 7 (Not From a modified universal core! )**

## **FEATURES:**

1. **Designed Specifically for Version 7 (not modified from an universal core!)**
2. **Special 5 layers reinforced Silicone construction.**
3. **Dyno proven design and performance**
4. **Best Quality, Design, and performance! Over 30 years intercooler design and manufacture experience**
5. **Improve throttle response and torque.**
6. **Awards winning HDi Clamps included!**
7. **Winch friendly!!**
8. **Easy to install**

**HDi Design, Test and Manufacture**

**for more information, please contact**

**[Sales@hybrid-power.com](mailto:Sales@hybrid-power.com)**

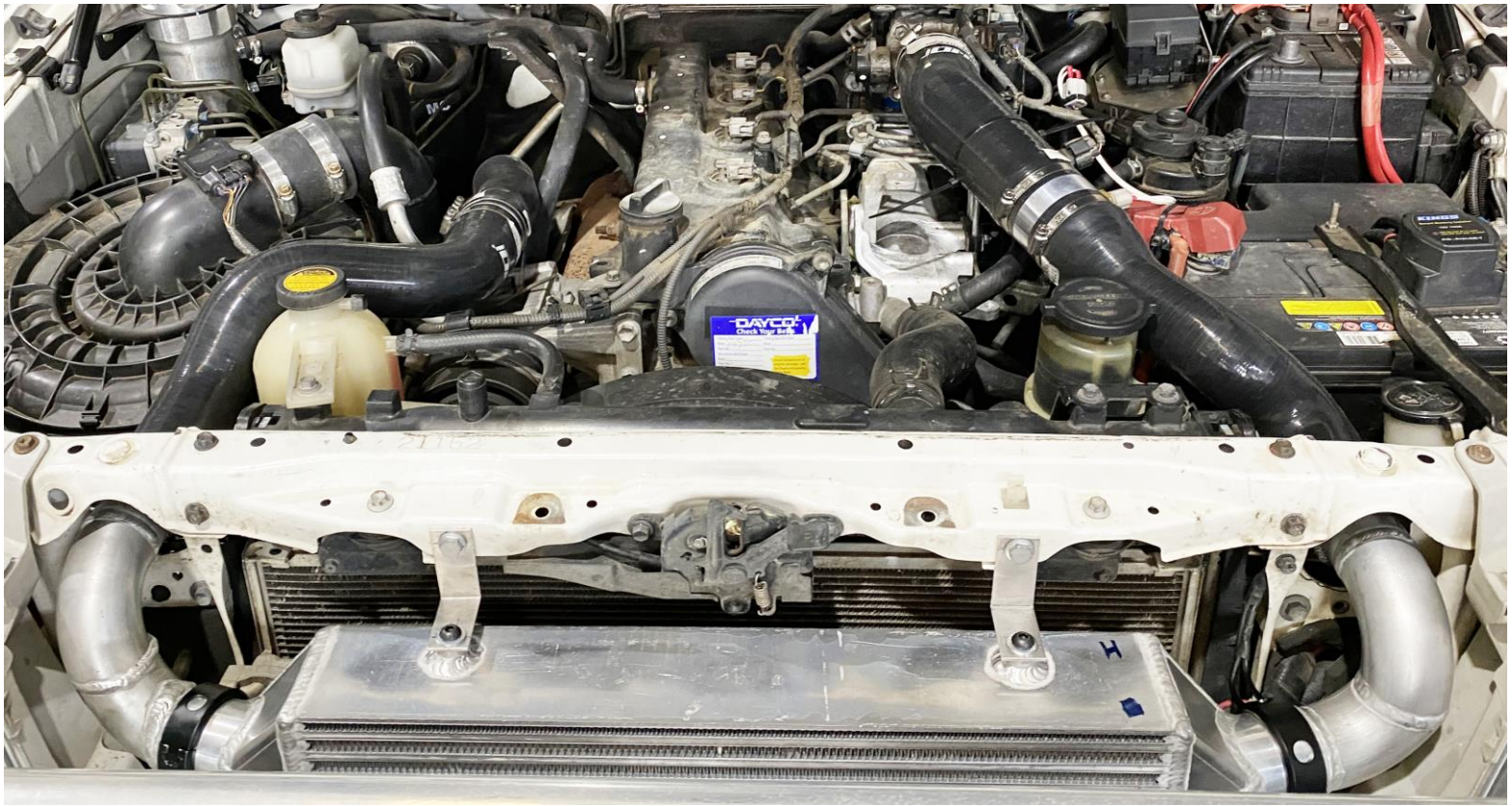
**Or check out [www.hdiranger.com](http://www.hdiranger.com)**



## FEATURES :

1. Designed Specifically for Version 7  
(Not modified from an universal core!)







## 1.Special 5 layers reinforced silicone construction



## 2. Silicone Nomex Oil and heat resistant layer



1.

**Best**

**Quality, Design, and performance! Over 30 years intercooler design and manufacture experience**

# 1. Dyno proven design and performance



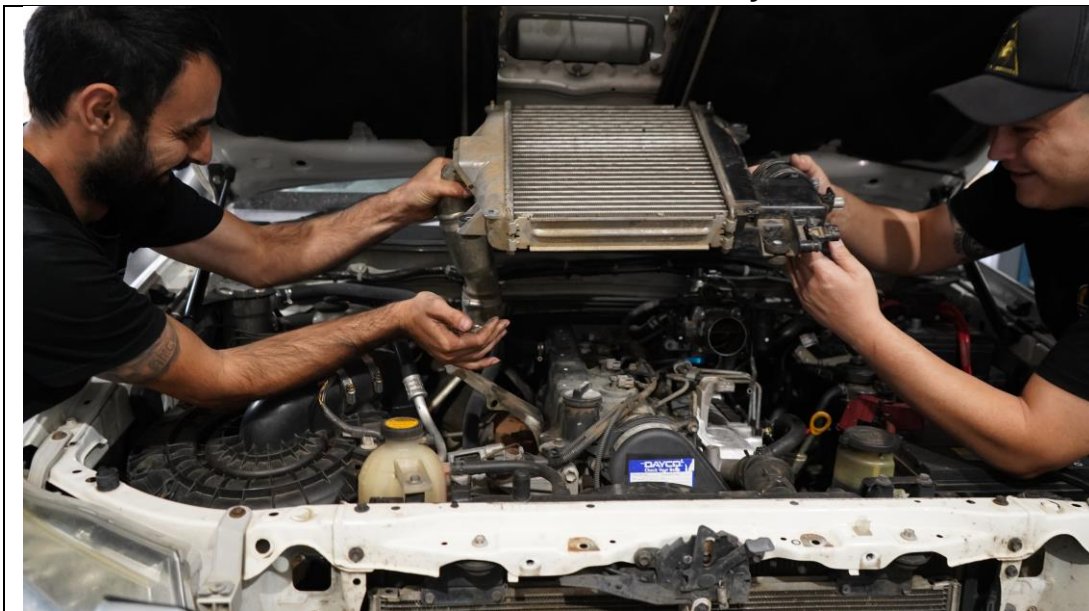
## 4. Improve throttle response and torque.

**5. Supplied with quality stainless steel hose clamps.**





## 6.Easy to install



Remove the standard intercooler



remover STD intercooler holding brackets



Install HDi hot pipe with hose clamp (do not tighten it for further adjustment)

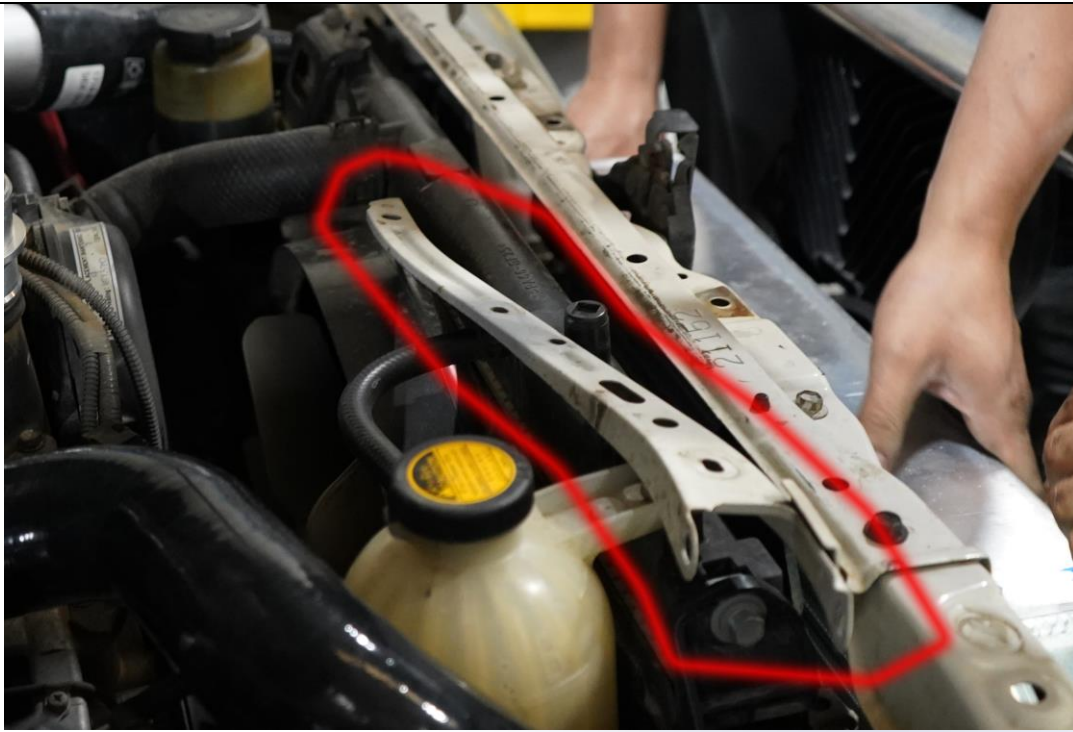




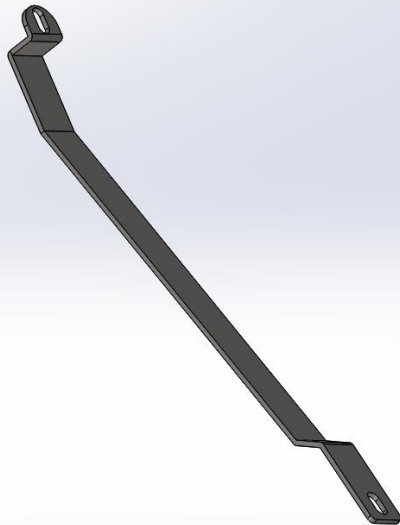
Enlarge the holes each  
side from the radiator  
support  
For the intercooler  
pipe passage

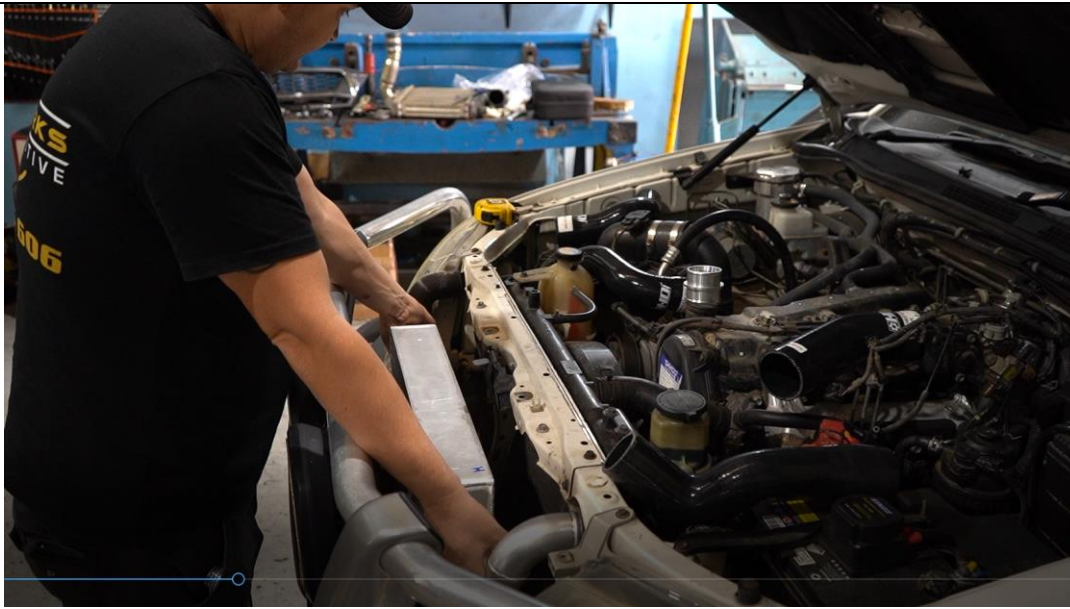


The best way is to  
insert a precut wood as  
a guide ,makes sure all  
the wire and electrical  
is out of the way!  
deburr the edges and  
apply anti rust  
protection then A  
rubber grommet is a  
good idea!



Remove the centre latch  
support and replace the  
supplied stainless  
Item





Install the intercooler, top and bottom brackets do not tighten for further adjustment  
Note : do not use the O-rings yet !



Align up both sides intercooler pipes position and tighten all the intercooler brackets bolts!  
Note: you may need to trim the bracket for the best position!







Connect all intercooler hoses



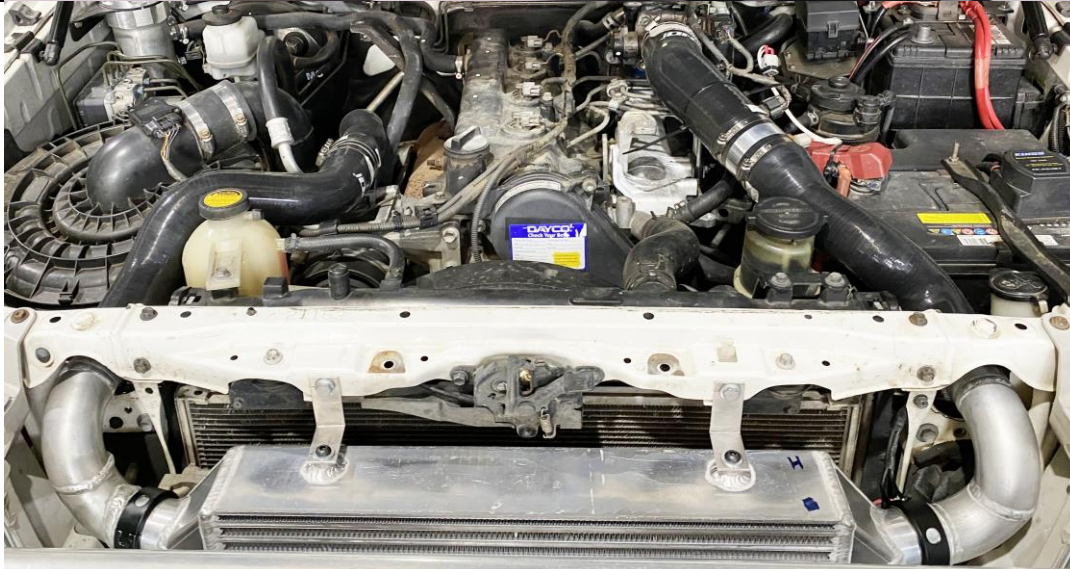
Connect all silicon hoses and clamps,  
Some plastic parts may be in the way of the intercooler hose path you can trim them off to make room.



Install the sensors on to HDi Sensor adaptor pipe

(As our goal to constant improvement

The kit has been upgraded with a sensor adaptor pipe which may be different than the previous photo shown in silicon)



Recheck

All nuts and bolts , clearance for perfect position , 0-rings are installed then tighten all the hose clamps

**Note: installation instruction is for reference only, depends your experience, there are many different may of install it, and picture may be different than The actual product.**





Finished